



Add: No.11, North Qi Road, Yuqi Town, Wuxi City
Tel:(+86)0510-83880396
Mob:(+86)18051502183
Web:sanyou-wx.com
Email: bruce@sanyou-wx.com



科技创新 引领未来



**WUXI SANYOU AUTOMOBILE
ELECTRIC FACTORY**

无锡市三友汽车电器厂



CONTENTS

目录

公司简介
Company Profile

产品介绍
Product Introduction

| | |
|----------------|-------|
| 马勒 MAHLE | 02-06 |
| 德科雷米 Delco | 07-12 |
| 博世 Bosch | 13-23 |
| 小松 Komatsu | 24-25 |
| 三菱 Mitsubishi | 26-30 |
| 佩特来 Prestolite | 31-32 |
| 丰田 Toyota | 33-35 |
| 法雷奥 Valeo | 36-38 |
| 日立 Hitachi | 39-41 |
| 日野 Hino | 42-43 |
| 大宇 Hyundai | 44-45 |



COMPANY PROFILE

我厂专业生产汽车、拖拉机、内燃机用起动机、发电机及零部件。我厂生产加工工艺先进，设备齐全，检测手段严格。经过多年的努力创业，逐步形成了一个具有一定规模和实力的企业。“锡运”牌商标也已在同行中颇具影响，产品销往全国各地，部分产品零部件出口美国、加拿大、俄罗斯、巴西等国家深受广大用户的欢迎和好评。

我厂现有固定资产 500 多万元流动资金 400 多万元占地面积 20000 多平方米，建筑面积 12000 多平方米。目前生产工程机械用直流起动机和交流发电机。主要设备有大型油压机 2 台，中小型油压机 5 台，车床、磨床、铣床等金加工机床 30 余台，各种检验专用设备 50 余台套，现有职工 60 多人，其中工程师 3 名，技师 5 人，专职技术人员 9 人。现已具备年生产起动机 15 多万台、发电机 20 多万台、电枢 15 多万只电磁开关、15 多万只的能力。

我厂目前组织体制健全。厂部下设质检、技术、生产、供销、财务五个管理部门和发电机总装起动机总装和金加工三个车间；各项组织管理规章制度和培训计划也正在进一步完善，为企业高效率高质量的生产提供保障。

我厂 2000 年 12 月通过了 ISO9000 国际质量体系认证，2001 年被评为 AAA 级资信企业，2023 年通过了 IATF16949 认证。目前我厂配套的主机厂有上海柴油机厂，南通柴油机厂，贵阳柴油机厂，无锡动力工程有限公司，天津动力机厂等。

我厂将坚定不移地贯彻执行“质量第一、用户至上、严格管理、创立名牌”的宗旨，以至诚的服务和精良的品质为广大用户提供更优良的产品。

Our factory specializes in producing starters, generators, and components for automobiles, tractors, and internal combustion engines. Our factory has advanced production and processing technology, complete equipment, and strict testing methods. After years of hard work and entrepreneurship, a company with a certain scale and strength has gradually formed. The "Xiyun" brand trademark has also gained considerable influence among peers, with products sold throughout the country. Some of the product components are exported to countries such as the United States, Canada, Russia, and Brazil, and are highly welcomed and praised by users.

Our factory currently has fixed assets of over 5 million yuan and working capital of over 4 million yuan, covering an area of over 20000 square meters and a building area of over 12000 square meters. At present, DC starters and AC generators are used in the production of construction machinery. The main equipment includes 2 large hydraulic presses, 5 small and medium-sized hydraulic presses, more than 30 metal processing machine tools such as lathes, grinders, and milling machines, and more than 50 sets of various specialized inspection equipment. There are currently more than 60 employees, including 3 engineers, 5 technicians, and 9 full-time technical personnel. We now have the ability to produce over 150000 starter motors, over 200000 generators, over 150000 electromagnetic switches for armatures, and over 150000 units annually.

Our factory currently has a sound organizational structure. The factory has five management departments including quality inspection, technology, production, supply and marketing, and finance, as well as three workshops for generator assembly, starter assembly, and metal processing; Various organizational management regulations and training plans are also being further improved to provide guarantees for efficient and high-quality production in enterprises.

Our factory passed the ISO9000 international quality system certification in December 2000, was rated as an AAA credit enterprise in 2001, and passed the IATF16949 certification in 2023. At present, our factory's supporting host factories include Shanghai Diesel Engine Factory, Nantong Diesel Engine Factory, Guiyang Diesel Engine Factory, Wuxi Power Engineering Co., Ltd., Tianjin Power Engine Factory, etc.

Our factory will firmly implement the principle of "quality first, customer first, strict management, and creating a famous brand", and provide better products to our customers with sincere service and excellent quality.

设备展示 Product



ALT98



Alternator endurance test bench



Automatic coil winding machine



Starter endurance test bench

SY NO.: SYIK001



OEM NO.: MG111
Voltage 电压: 12V
Current 电流: 60A
Pulley 皮带轮:

SY NO.: SYIK002



OEM NO.: MG614
Voltage 电压: 12V
Current 电流: 60A
Pulley 皮带轮:

SY NO.: SYIK010



OEM NO.: MG3
Voltage 电压: 12V
Current 电流: 150A
Pulley 皮带轮:

SY NO.: SYIK011



OEM NO.: MG223
Voltage 电压: 12V
Current 电流: 120A
Pulley 皮带轮: 8PK

SY NO.: SYIK003



OEM NO.: MG198
Voltage 电压: 24V
Current 电流: 60A
Pulley 皮带轮:

SY NO.: SYIK004



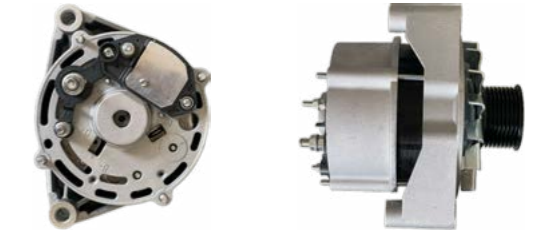
OEM NO.: MG141
Voltage 电压: 24V
Current 电流: 100A
Pulley 皮带轮: 6PK 75

SY NO.: SYIK012



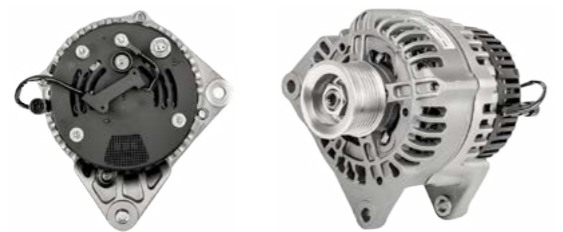
OEM NO.: MG502
Voltage 电压: 12V
Current 电流: 95A
Pulley 皮带轮: 1PK 36mm

SY NO.: SYIK013



OEM NO.: MG926
Voltage 电压: 12V
Current 电流: 95A
Pulley 皮带轮:

SY NO.: SYIK005



OEM NO.: MG623
Voltage 电压: 24V
Current 电流: 55A
Pulley 皮带轮: 8PK 56mm

SY NO.: SYIK006



OEM NO.: MG165
Voltage 电压: 12V
Current 电流: 120A
Pulley 皮带轮:

SY NO.: SYIK014



OEM NO.: F000BL0444
Voltage 电压: 12V
Current 电流: 90A
Pulley 皮带轮: 8PK 博世款

SY NO.: SYIK015



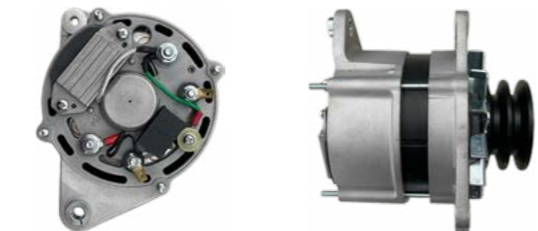
OEM NO.: MG563
Voltage 电压: 12V
Current 电流: 45A
Pulley 皮带轮:

SY NO.: SYIK007



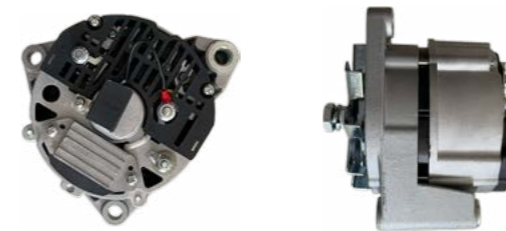
OEM NO.: MG575
Voltage 电压: 12V
Current 电流: 150A
Pulley 皮带轮:

SY NO.: SYIK009



OEM NO.: MG307
Voltage 电压: 24V
Current 电流: 55A
Pulley 皮带轮:

SY NO.: SYIK016



OEM NO.: MG118
Voltage 电压: 12V
Current 电流: 55A
Pulley 皮带轮:

SY NO.: SYIK018



OEM NO.: MG595
Voltage 电压: 12V
Current 电流: 65A
Pulley 皮带轮:

SY NO.: SYIK019



OEM NO.: MG312
Voltage 电压: 24V
Current 电流: 55A
Pulley 皮带轮: 无皮带盘

SY NO.: SYIK021



OEM NO.: MG473
Voltage 电压: 24V
Current 电流: 80A
Pulley 皮带轮: 无皮带盘

SY NO.: SYIK030



OEM NO.: MG286
Voltage 电压: 12V
Current 电流: 120A
Pulley 皮带轮: 8PK 61mm

SY NO.: SYIK031



OEM NO.: MG327
Voltage 电压: 12V
Current 电流: 120A
Pulley 皮带轮: 8PK 60mm

SY NO.: SYIK022



OEM NO.: MG169
Voltage 电压: 12V
Current 电流: 95A
Pulley 皮带轮:

SY NO.: SYIK023



OEM NO.: MG69
Voltage 电压: 24V
Current 电流: 55A
Pulley 皮带轮: 8PK 56mm

SY NO.: SYIK032



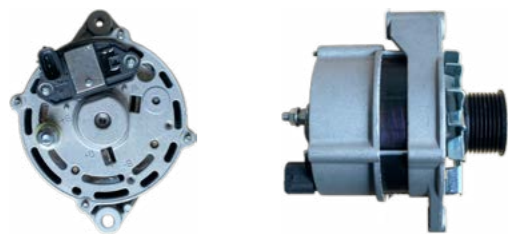
OEM NO.: MG648
Voltage 电压: 12V
Current 电流: 200A
Pulley 皮带轮:

SY NO.: SYIK033



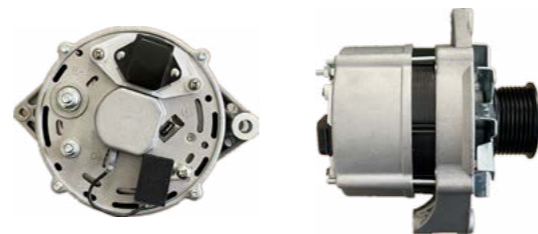
OEM NO.: MG340
Voltage 电压: 12V
Current 电流: 120A
Pulley 皮带轮:

SY NO.: SYIK025



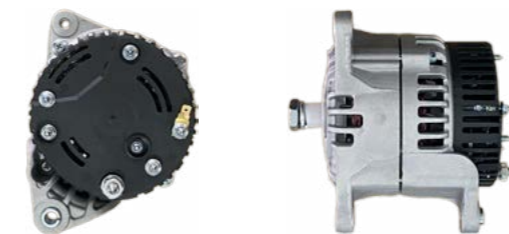
OEM NO.: MG137
Voltage 电压: 12V
Current 电流: 120A
Pulley 皮带轮: 8PK 55mm

SY NO.: SYIK026



OEM NO.: CA1198IR
Voltage 电压: 12V
Current 电流: 95A 双槽
Pulley 皮带轮:

SY NO.: SYIK034



OEM NO.: MG308
Voltage 电压: 12V
Current 电流: 120A
Pulley 皮带轮:

SY NO.: SYIK035



OEM NO.: MG15
Voltage 电压: 12V
Current 电流: 100A
Pulley 皮带轮: 6PK 67mm

SY NO.: SYIK027



OEM NO.: MG30
Voltage 电压: 12V
Current 电流: 150A
Pulley 皮带轮: 10PK 61mm

SY NO.: SYIK029



OEM NO.: MG177
Voltage 电压: 12V
Current 电流: 95A
Pulley 皮带轮:

SY NO.: SYIK036



OEM NO.: MG562
Voltage 电压: 12V
Current 电流: 120A
Pulley 皮带轮: 无皮带盘

SY NO.: SYIK037



OEM NO.: MG74
Voltage 电压: 12V
Current 电流: 95A
Pulley 皮带轮: 8PK 56/60

SY NO.: SYIK038



OEM NO.: MG322
Voltage 电压: 24V
Current 电流: 50A
Pulley 皮带轮: 8PK 60mm

SY NO.: SYIK039



OEM NO.: MG209
Voltage 电压: 12V
Current 电流: 55A
Pulley 皮带轮:

SY NO.: SYDR001



OEM NO.: 220236
Voltage 电压: 12V
Current 电流: 50A
Pulley 皮带轮: 1PK 65mm

SY NO.: SYDR002



OEM NO.: 19020616
Voltage 电压: 12V
Current 电流: 70A
Pulley 皮带轮: 2A72

SY NO.: SYIK040



OEM NO.: MG146
Voltage 电压: 12V
Current 电流: 80A
Pulley 皮带轮: 8PK

SY NO.: SYIK041



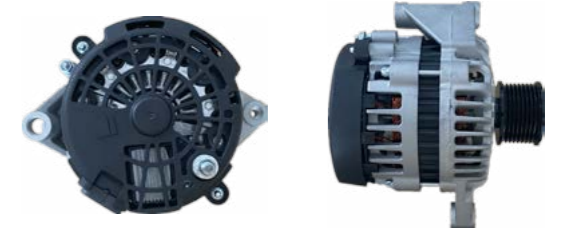
OEM NO.: MG182
Voltage 电压: 12V
Current 电流: 120A
Pulley 皮带轮:

SY NO.: SYDR003



OEM NO.: 8600000
Voltage 电压: 12V
Current 电流: 95A
Pulley 皮带轮: 8PK

SY NO.: SYDR004



OEM NO.: 8600282
Voltage 电压: 24V
Current 电流: 55A
Pulley 皮带轮: 8PK-55/59mm

SY NO.: SYIK042



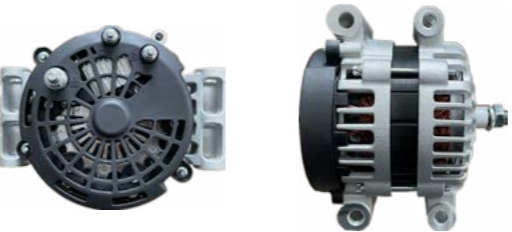
OEM NO.: MG369
Voltage 电压: 24V
Current 电流: 35A
Pulley 皮带轮:

SY NO.: SYIK043



OEM NO.: MG462
Voltage 电压: 12V
Current 电流: 33A
Pulley 皮带轮: 1V85

SY NO.: SYDR005



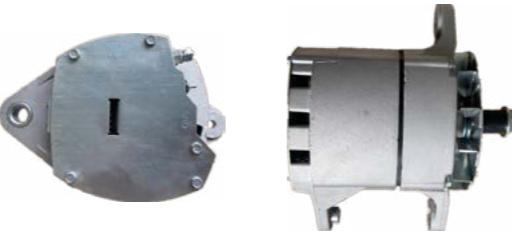
OEM NO.: 8600366
Voltage 电压: 12V
Current 电流: 180A
Pulley 皮带轮: 7PK 50

SY NO.: SYDR006



OEM NO.: 8600595
Voltage 电压: 24V
Current 电流: 70A
Pulley 皮带轮: 8PK- 外 70.5

SY NO.: SYDR007



OEM NO.: 6N9294
Voltage 电压: 24V
Current 电流: 45A
Pulley 皮带轮: 8PK

SY NO.: SYDR008



OEM NO.: 19010111
Voltage 电压: 24V
Current 电流: 70A
Pulley 皮带轮:

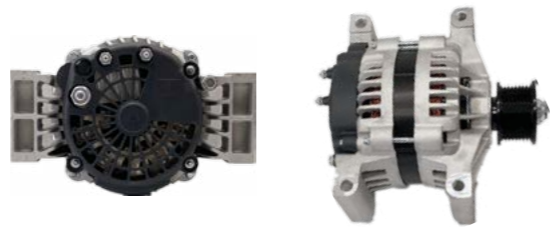


SY NO.: SYDR009



OEM NO.: 19020889
Voltage 电压: 12V
Current 电流: 160A 方角
Pulley 皮带轮:

SY NO.: SYDR010



OEM NO.: 8600889
Voltage 电压: 12V
Current 电流: 160A 竖出 (康明斯 153)
Pulley 皮带轮:

SY NO.: SYDR011



OEM NO.: 8600360
Voltage 电压: 24V
Current 电流: 70A 竖出
Pulley 皮带轮:

SY NO.: SYDR012



OEM NO.: 19010000
Voltage 电压: 24V
Current 电流: 75A
Pulley 皮带轮:

SY NO.: SYDR013



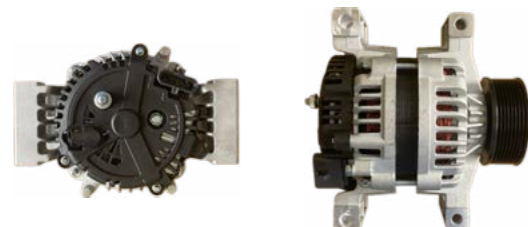
OEM NO.: 10459244
Voltage 电压: 24V
Current 电流: 75A
Pulley 皮带轮:

SY NO.: SYDR014



OEM NO.: 8600467
Voltage 电压: 24V
Current 电流: 110A
Pulley 皮带轮:

SY NO.: SYDR015



OEM NO.: 8600621
Voltage 电压: 24V
Current 电流: 100A
Pulley 皮带轮: 8PK-93mm

SY NO.: SYDR016



OEM NO.: 1117805
Voltage 电压: 24V
Current 电流: 100A
Pulley 皮带轮:

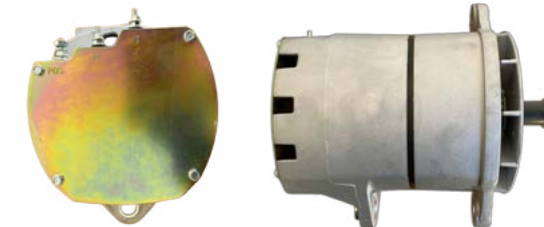


SY NO.: SYDR017



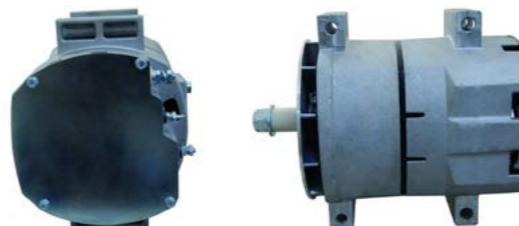
OEM NO.: 19011164
Voltage 电压: 24V 100A/12V 90A
Current 电流:
Pulley 皮带轮:

SY NO.: SYDR018



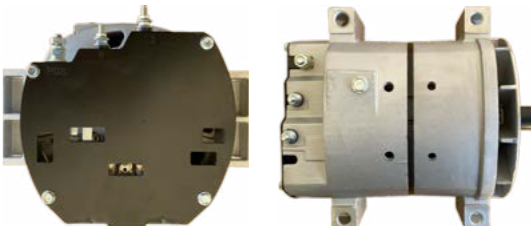
OEM NO.: 19011175
Voltage 电压: 24V
Current 电流: 100A
Pulley 皮带轮:

SY NO.: SYDR019



OEM NO.: 19011216
Voltage 电压: 12V
Current 电流: 135A
Pulley 皮带轮:

SY NO.: SYDR020



OEM NO.: 19011252
Voltage 电压: 12V
Current 电流: 140A
Pulley 皮带轮:

SY NO.: SYDR021



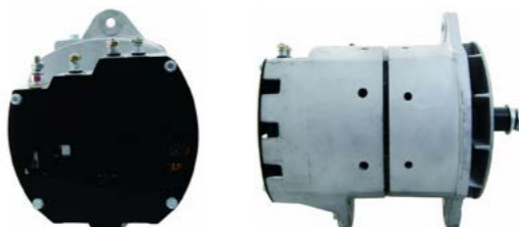
OEM NO.: 19011234
Voltage 电压: 12V
Current 电流: 140A
Pulley 皮带轮:

SY NO.: SYDR022



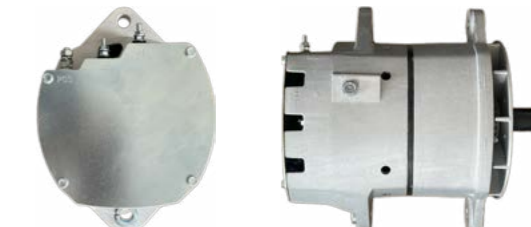
OEM NO.: 19011227
Voltage 电压: 12V
Current 电流: 140A
Pulley 皮带轮:

SY NO.: SYDR023



OEM NO.: 8600072
Voltage 电压: 12V
Current 电流: 170A
Pulley 皮带轮:

SY NO.: SYDR024



OEM NO.: 8600071
Voltage 电压: 12V
Current 电流: 170A
Pulley 皮带轮:

SY NO.: SYDR025



OEM NO.: 8600252
Voltage 电压: 12V
Current 电流: 170A
Pulley 皮带轮:

SY NO.: SYDR026



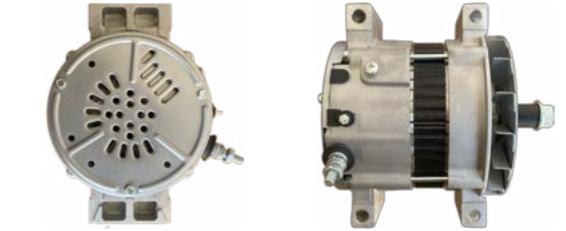
OEM NO.: 8600628
Voltage 电压: 12V
Current 电流: 320A
Pulley 皮带轮:

SY NO.: SYDR033



OEM NO.: 30090100070
Voltage 电压: 12V
Current 电流: 85A
Pulley 皮带轮: 1V-85mm

SY NO.: SYDR034



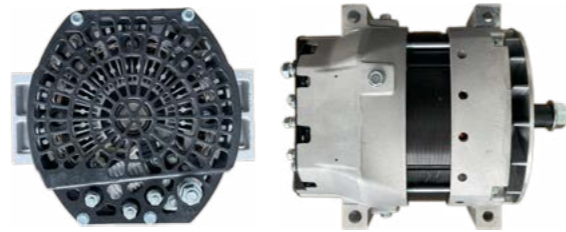
OEM NO.: 1012118400
Voltage 电压: 24V
Current 电流: 95A
Pulley 皮带轮:

SY NO.: SYDR027



OEM NO.: 8600634
Voltage 电压: 12V
Current 电流: 320A
Pulley 皮带轮:

SY NO.: SYDR028



OEM NO.: 8600480
Voltage 电压: 24V
Current 电流: 275A
Pulley 皮带轮:

SY NO.: SYDR035



OEM NO.: 1012118340
Voltage 电压: 24V
Current 电流: 95A
Pulley 皮带轮:

SY NO.: SYDR036



OEM NO.: 5263218
Voltage 电压: 24V
Current 电流: 75A
Pulley 皮带轮:

SY NO.: SYDR029



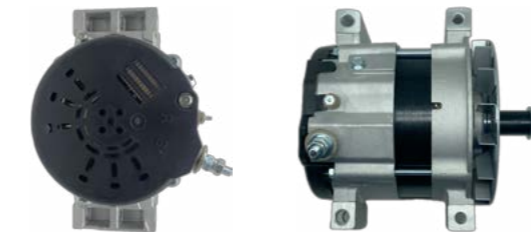
OEM NO.: 8600580
Voltage 电压: 24V
Current 电流: 275A
Pulley 皮带轮:

SY NO.: SYDR030



OEM NO.: 8600564
Voltage 电压: 24V
Current 电流: 275A
Pulley 皮带轮:

SY NO.: SYDR037



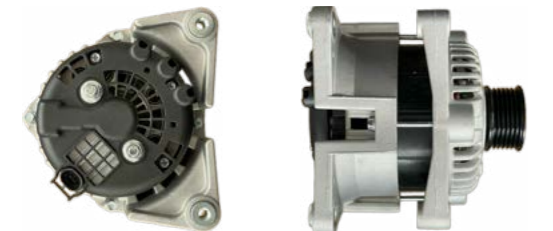
OEM NO.: 1012109010
Voltage 电压: 24V
Current 电流: 150A
Pulley 皮带轮:

SY NO.: SYDR038



OEM NO.: 1012109000
Voltage 电压: 24V
Current 电流: 150A
Pulley 皮带轮:

SY NO.: SYDR031



OEM NO.: 21513N
Voltage 电压: 12V
Current 电流: 100A
Pulley 皮带轮: 6PK-53mm

SY NO.: SYDR032



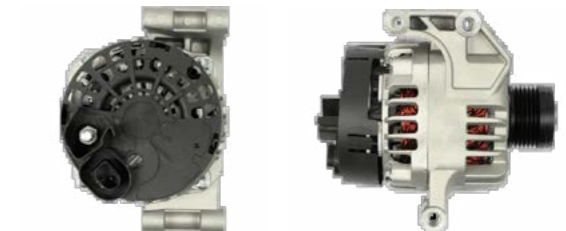
OEM NO.: 21011N
Voltage 电压: 12V
Current 电流: 140A
Pulley 皮带轮: 6PK-28593

SY NO.: SYDR039



OEM NO.: 6621545402
Voltage 电压: 12V
Current 电流: 75A
Pulley 皮带轮: 6PK-55mm 单向轮 28593

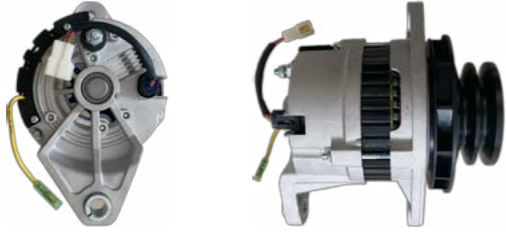
SY NO.: SYDR040



OEM NO.: 101210-1700 21571N
Voltage 电压: 12V
Current 电流: 120A
Pulley 皮带轮: 6PK-LIN



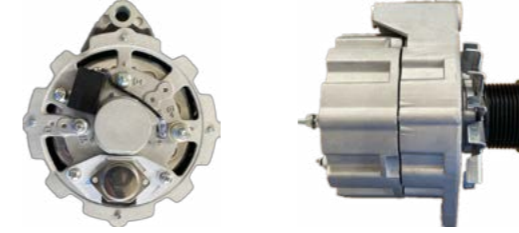
SY NO.: SYDR041



OEM NO.: 300901-00007
Voltage 电压: 24V
Current 电流: 45A
Pulley 皮带轮: 2093mm



SY NO.: SYBO001A



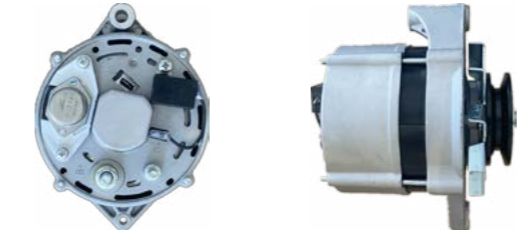
OEM NO.: 9120080006
Voltage 电压: 12V
Current 电流: 85A
Pulley 皮带轮: 8PK60/64mm

SY NO.: SYBO002



OEM NO.: CA1035IR
Voltage 电压: 24V
Current 电流: 80A
Pulley 皮带轮:

SY NO.: SYBO003



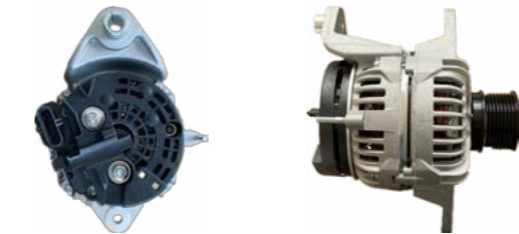
OEM NO.: CA1197IR
Voltage 电压: 12V
Current 电流: 55A
Pulley 皮带轮: A80

SY NO.: SYBO004



OEM NO.: CA1378IR
Voltage 电压: 12V
Current 电流: 90A
Pulley 皮带轮: 6PK

SY NO.: SYBO005A



OEM NO.: CA1853IR
Voltage 电压: 24V
Current 电流: 80A
Pulley 皮带轮: 8PK (原装)

SY NO.: SYBO006



OEM NO.: 0124625030
Voltage 电压: 12V
Current 电流: 200A
Pulley 皮带轮:

SY NO.: SYBO007



OEM NO.: CA853IR
Voltage 电压: 24V
Current 电流: 80A
Pulley 皮带轮: 2A76

SY NO.: SYBO008



OEM NO.: CA907IR
Voltage 电压: 24V
Current 电流: 80A
Pulley 皮带轮: 8PK

SY NO.: SYBO009



OEM NO.: CA1236IR
Voltage 电压: 24V
Current 电流: 140A
Pulley 皮带轮:

SY NO.: SYBO010



OEM NO.: 0124525035
Voltage 电压: 12V
Current 电流: 150A
Pulley 皮带轮: 6PK 54mm

SY NO.: SYBO011



OEM NO.: 0124555063
Voltage 电压: 24V
Current 电流: 80A
Pulley 皮带轮: 7PK

SY NO.: SYBO012



OEM NO.: CA1394IR
Voltage 电压: 12V
Current 电流: 120A
Pulley 皮带轮: 6PK 56mm 28583

SY NO.: SYBO013



OEM NO.: 0120488282
Voltage 电压: 12V
Current 电流: 55A
Pulley 皮带轮:

SY NO.: SYBO014



OEM NO.: 0124625029
Voltage 电压: 12V
Current 电流: 200A
Pulley 皮带轮: 8PK 64.5mm

SY NO.: SYBO015



OEM NO.: CA1684IR
Voltage 电压: 12V
Current 电流: 90A
Pulley 皮带轮: 6PK 68mm

SY NO.: SYBO016



OEM NO.: 0124325098
Voltage 电压: 12V
Current 电流: 90A
Pulley 皮带轮: 2B 98mm

SY NO.: SYBO017



OEM NO.: 0124325109
Voltage 电压: 12V
Current 电流: 90A
Pulley 皮带轮: 8PK 58mm

SY NO.: SYBO018



OEM NO.: 0124655102
Voltage 电压: 24V
Current 电流: 150A
Pulley 皮带轮: 8PK 63mm

SY NO.: SYBO019



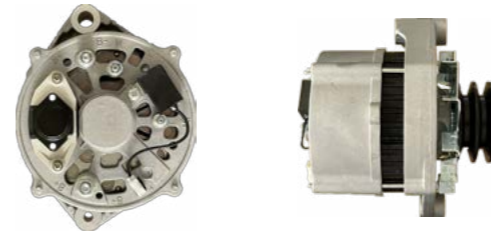
OEM NO.: 0124655120
Voltage 电压: 24V
Current 电流: 120A
Pulley 皮带轮:

SY NO.: SYBO020



OEM NO.: 0124325107
Voltage 电压: 12V
Current 电流: 90A
Pulley 皮带轮: 8PK 64mm

SY NO.: SYBO021



OEM NO.: 0120469798
Voltage 电压: 24V
Current 电流: 55A
Pulley 皮带轮: 2A 75mm

SY NO.: SYBO022



OEM NO.: 0120469729
Voltage 电压: 12V
Current 电流: 90A
Pulley 皮带轮: 1V076mm

SY NO.: SYBO023



OEM NO.: CA227IR
Voltage 电压: 24V
Current 电流: 55A
Pulley 皮带轮:

SY NO.: SYBO024



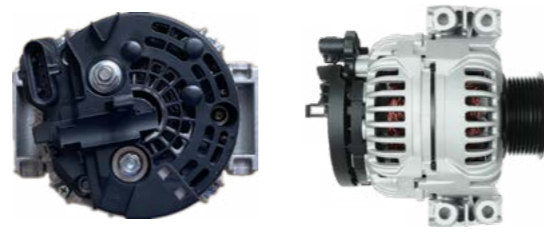
OEM NO.: CA1378IR
Voltage 电压: 12V
Current 电流: 90A
Pulley 皮带轮: 6PK 56mm 28583

SY NO.: SYBO025



OEM NO.: CA854IR
Voltage 电压: 24V
Current 电流: 35A
Pulley 皮带轮: 2A 80mm

SY NO.: SYBO026



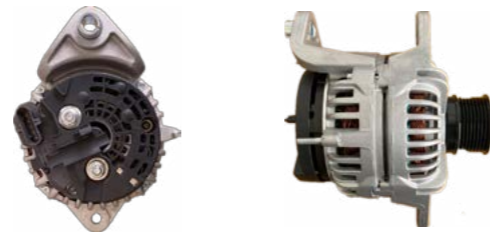
OEM NO.: CA1851R
Voltage 电压: 24V
Current 电流: 80A
Pulley 皮带轮: 72/76mm

SY NO.: SYBO027



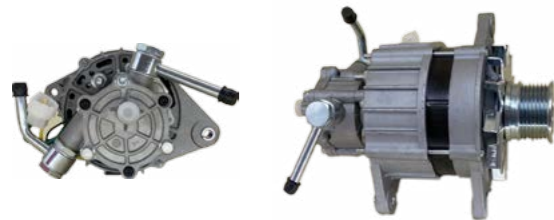
OEM NO.: AAK1808
Voltage 电压: 12V
Current 电流: 75A
Pulley 皮带轮: 8PK

SY NO.: SYBO028



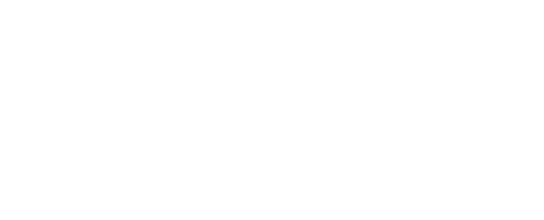
OEM NO.: CA1883IR
Voltage 电压: 24V
Current 电流: 100A
Pulley 皮带轮: 8PK 62/66mm

SY NO.: SYBO029



OEM NO.: F002G10422
Voltage 电压: 12V
Current 电流: 90A
Pulley 皮带轮: 7PK

SY NO.: SYBO030



OEM NO.: CA1679IR
Voltage 电压: 12V
Current 电流: 120A
Pulley 皮带轮: 6PK 68/72mm

SY NO.: SYBO030A



OEM NO.: CA1699IR
Voltage 电压: 24V
Current 电流: 70A
Pulley 皮带轮: 8PK 55/59mm

SY NO.: SYBO031



OEM NO.: 0123335002
Voltage 电压: 12V
Current 电流: 90A
Pulley 皮带轮: 6PK 48/52mm

SY NO.: SYBO032



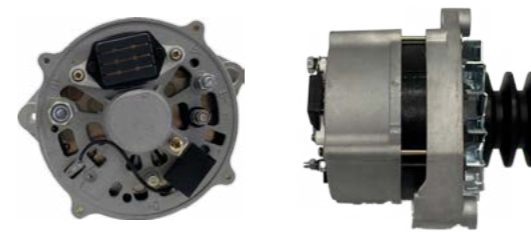
OEM NO.: 012352006
Voltage 电压: 12V
Current 电流: 150A
Pulley 皮带轮: 6PK 44mm

SY NO.: SYBO033



OEM NO.: CA1663IR
Voltage 电压: 24V
Current 电流: 90A
Pulley 皮带轮: 无皮带盘

SY NO.: SYBO034



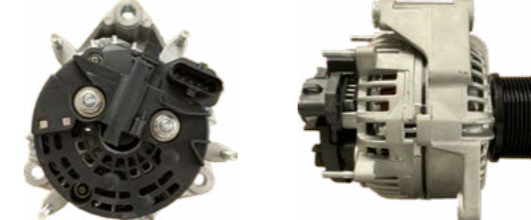
OEM NO.: CA500IR
Voltage 电压: 24V
Current 电流: 55A
Pulley 皮带轮:

SY NO.: SYBO035



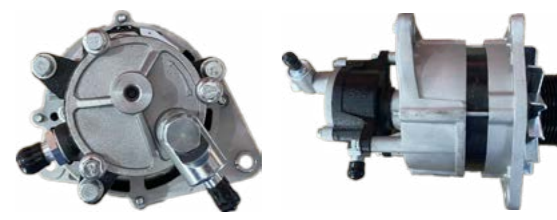
OEM NO.: 0124655076
Voltage 电压: 24V
Current 电流: 115A
Pulley 皮带轮: 12PK

SY NO.: SYBO036A



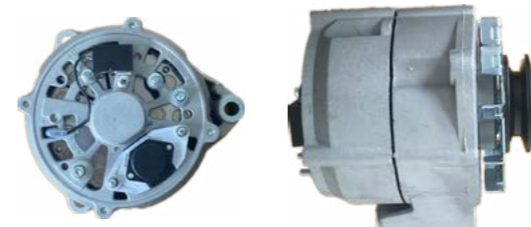
OEM NO.: CA1666IR
Voltage 电压: 24V
Current 电流: 80A
Pulley 皮带轮: 9PK

SY NO.: SYBO037



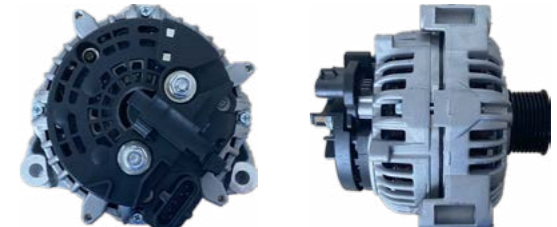
OEM NO.: F000LD0114
Voltage 电压: 12V
Current 电流: 85A
Pulley 皮带轮: 7PK-62/66mm 带泵

SY NO.: SYBO038



OEM NO.: CA333IR
Voltage 电压: 24V
Current 电流: 55A
Pulley 皮带轮: 2A78

SY NO.: SYBO039



OEM NO.: 0124655033
Voltage 电压: 24V
Current 电流: 130A
Pulley 皮带轮: 8PK 55/59 17孔

SY NO.: SYBO040



OEM NO.: CA550IR
Voltage 电压: 24V
Current 电流: 55A
Pulley 皮带轮: 无皮带盘

SY NO.: SYBO041



OEM NO.: CA76IR
Voltage 电压: 12V
Current 电流: 33A
Pulley 皮带轮: 1V080

SY NO.: SYBO042



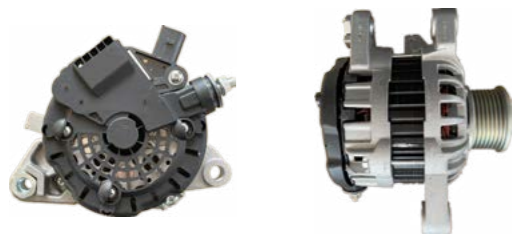
OEM NO.: CA1693IR
Voltage 电压: 24V
Current 电流: 110A
Pulley 皮带轮: 9PK84

SY NO.: SYBO043



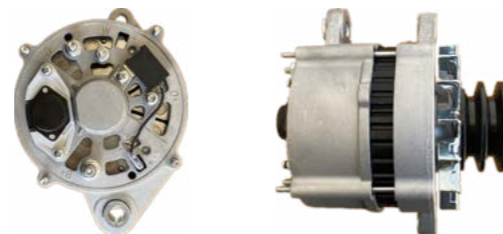
OEM NO.: 0124655021
Voltage 电压: 24V
Current 电流: 120A
Pulley 皮带轮: 8PK73

SY NO.: SYBO044



OEM NO.: F000BL0132
Voltage 电压: 12V
Current 电流: 90A
Pulley 皮带轮: 7PK

SY NO.: SYBO045



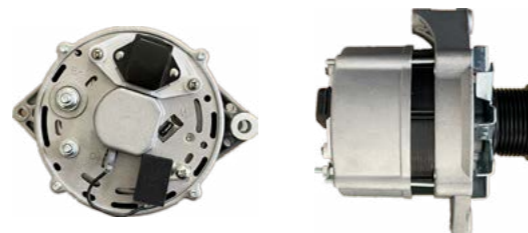
OEM NO.: CA326IR
Voltage 电压: 24V
Current 电流: 55A
Pulley 皮带轮: 2A 78mm

SY NO.: SYBO046



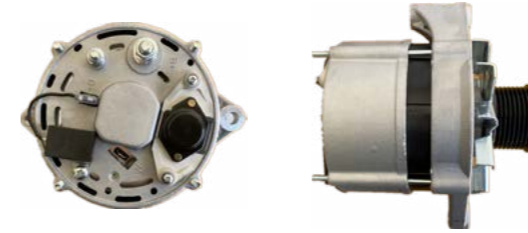
OEM NO.: 0124555121
Voltage 电压: 24V
Current 电流: 80A
Pulley 皮带轮: 8PK-64mm

SY NO.: SYBO047



OEM NO.: CA1198IR
Voltage 电压: 12V
Current 电流: 95A
Pulley 皮带轮: 2PK

SY NO.: SYBO048



OEM NO.: 0120488206
Voltage 电压: 24V
Current 电流: 50A
Pulley 皮带轮: 8PK

SY NO.: SYBO049



OEM NO.: CA1880IR
Voltage 电压: 24V
Current 电流: 100A
Pulley 皮带轮: 8PK

SY NO.: SYBO050



OEM NO.: CA1381IR
Voltage 电压: 12V
Current 电流: 110A
Pulley 皮带轮:

SY NO.: SYBO051



OEM NO.: CA339IR
Voltage 电压: 12V
Current 电流: 55A
Pulley 皮带轮: 1PK

SY NO.: SYBO052



OEM NO.: 0124655081
Voltage 电压: 24V
Current 电流: 100A
Pulley 皮带轮: 8PK

SY NO.: SYBO053



OEM NO.: CA1854IR
Voltage 电压: 12V
Current 电流: 120A
Pulley 皮带轮: 6PK

SY NO.: SYBO054



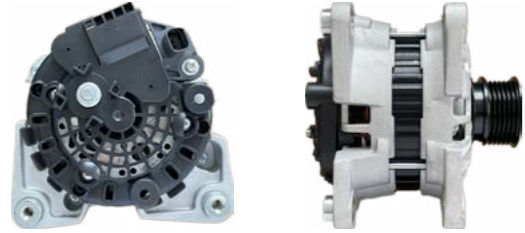
OEM NO.: CA1812IR
Voltage 电压: 24V
Current 电流: 90A
Pulley 皮带轮: 8PK 55mm

SY NO.: SYBO055



OEM NO.: CA1395IR
Voltage 电压: 12V
Current 电流: 90A
Pulley 皮带轮: 6PK 56mm

SY NO.: SYBO056



OEM NO.: F000BL04C9
Voltage 电压: 12V
Current 电流: 90A
Pulley 皮带轮: 6PK 54mm

SY NO.: SYBO057



OEM NO.: F000BL0639
Voltage 电压: 12V
Current 电流: 110A
Pulley 皮带轮: 7PK 58mm

SY NO.: SYBO058



OEM NO.: CA1819IR
Voltage 电压: 12V
Current 电流: 150A
Pulley 皮带轮:

SY NO.: SYBO059



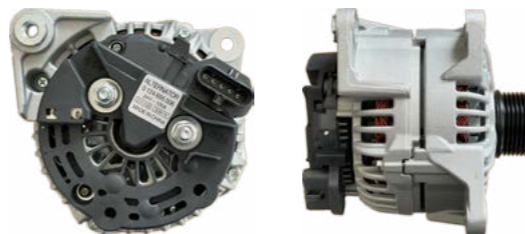
OEM NO.: CA1885IR
Voltage 电压: 12V
Current 电流: 120A
Pulley 皮带轮: 6PK 61mm

SY NO.: SYBO060



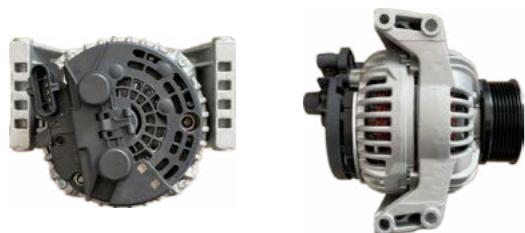
OEM NO.: 0120689534
Voltage 电压: 24V
Current 电流: 140A 双线制
Pulley 皮带轮:

SY NO.: SYBO061



OEM NO.: CA2117IR
Voltage 电压: 24V
Current 电流: 100A
Pulley 皮带轮: 8PK 53mm

SY NO.: SYBO062



OEM NO.: CA1939IR
Voltage 电压: 24V
Current 电流: 110A
Pulley 皮带轮: 7PK 84mm

SY NO.: SYBO063



OEM NO.: CA1689IR
Voltage 电压: 12V
Current 电流: 120A
Pulley 皮带轮: 6PK 55mm

SY NO.: SYBO064



OEM NO.: CA911IR
Voltage 电压: 12V
Current 电流: 65A
Pulley 皮带轮: 1PK 73mm

SY NO.: SYBO065



OEM NO.: CA1846IR
Voltage 电压: 12V
Current 电流: 200A
Pulley 皮带轮: 6PK 49mm

SY NO.: SYBO066



OEM NO.: CA642IR
Voltage 电压: 12V
Current 电流: 55A
Pulley 皮带轮: 1PK

SY NO.: SYBO067



OEM NO.: CA1477IR
Voltage 电压: 12V
Current 电流: 120A
Pulley 皮带轮: 6PK

SY NO.: SYBO068



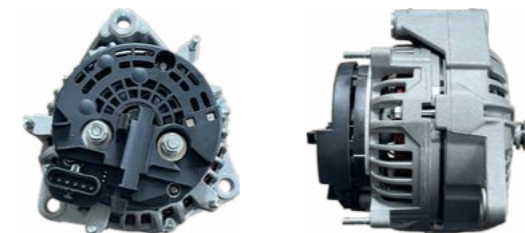
OEM NO.: 0124655141
Voltage 电压: 24V
Current 电流: 150A
Pulley 皮带轮: 10PK INA 调节器

SY NO.: SYBO069



OEM NO.: 0123525502
Voltage 电压: 24V
Current 电流: 90A
Pulley 皮带轮: 12PK61

SY NO.: SYBO070



OEM NO.: CA1997IR
Voltage 电压: 24V
Current 电流: 120A
Pulley 皮带轮: 9PK

SY NO.: SYBO071



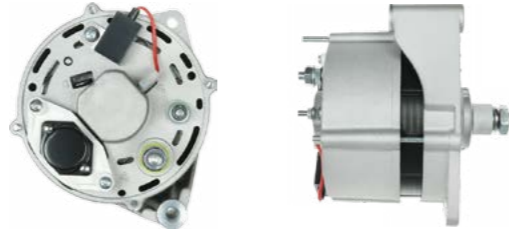
OEM NO.: 0124655085
Voltage 电压: 24V
Current 电流: 120A
Pulley 皮带轮: 8PK73

SY NO.: SYBO072



OEM NO.: CA1082IR
Voltage 电压: 12V
Current 电流: 90A
Pulley 皮带轮: 无皮带轮

SY NO.: SYBO073



OEM NO.: CA1433IR
Voltage 电压: 12V
Current 电流: 95A
Pulley 皮带轮:

SY NO.: SYBO080



OEM NO.: CA1582IR
Voltage 电压: 12V
Current 电流: 120A
Pulley 皮带轮: 6PK50

SY NO.: SYBO081



OEM NO.: CA1811IR
Voltage 电压: 12V
Current 电流: 140A
Pulley 皮带轮: 6PK56

SY NO.: SYBO074



OEM NO.: CA1824IR
Voltage 电压: 12V
Current 电流: 150A
Pulley 皮带轮: 6PK

SY NO.: SYBO075



OEM NO.: 0124655277
Voltage 电压: 24V
Current 电流: 150A
Pulley 皮带轮: 8PK93

SY NO.: SYBO082



OEM NO.: 0124525200
Voltage 电压: 12V
Current 电流: 140A
Pulley 皮带轮: 6PK49 单向轮 LIN

SY NO.: SYBO083



OEM NO.: CA1837IR
Voltage 电压: 12V
Current 电流: 140A
Pulley 皮带轮: 7PK55

SY NO.: SYBO076



OEM NO.: CA1752IR
Voltage 电压: 12V
Current 电流: 120A
Pulley 皮带轮: 7PK56 单向轮

SY NO.: SYBO077



OEM NO.: CA1765IR
Voltage 电压: 12V
Current 电流: 120A
Pulley 皮带轮: 5PK54

SY NO.: SYBO078



OEM NO.: CA1985IR
Voltage 电压: 12V
Current 电流: 140A
Pulley 皮带轮: 6PK49.5 单向轮

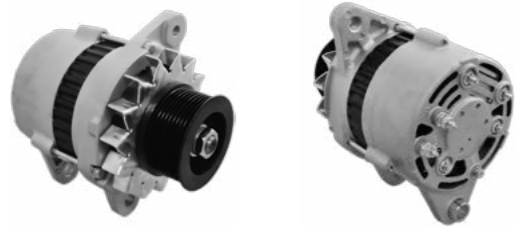
SY NO.: SYBO079



OEM NO.: CA1759IR
Voltage 电压: 12V
Current 电流: 120A
Pulley 皮带轮: 5PK56 单向轮



SY NO.: SYKO001



OEM NO.: 0330005840
Voltage 电压: 24V
Current 电流: 40A
Pulley 皮带轮:

SY NO.: SYKO002



OEM NO.: 6008216190
Voltage 电压: 24V
Current 电流: 25A/40A
Pulley 皮带轮: 1V95mm

SY NO.: SYKO009



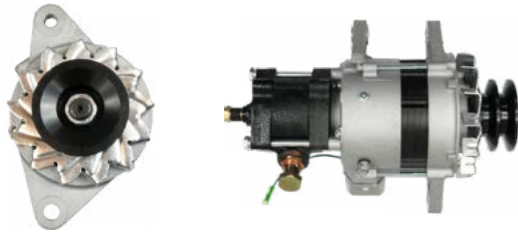
OEM NO.: 0350003871
Voltage 电压: 24V
Current 电流: 40A
Pulley 皮带轮: 2PK

SY NO.: SYKO010



OEM NO.: 6008256110
Voltage 电压: 24V
Current 电流: 60A
Pulley 皮带轮: 8PK95

SY NO.: SYKO003



OEM NO.: 6008215860
Voltage 电压: 24V
Current 电流: 25A
Pulley 皮带轮: 2PK

SY NO.: SYKO004

OEM NO.:
Voltage 电压:
Current 电流:
Pulley 皮带轮:

SY NO.: SYKO011



OEM NO.: 0350000402
Voltage 电压: 24V
Current 电流: 35A
Pulley 皮带轮: 2C954

SY NO.: SYKO012



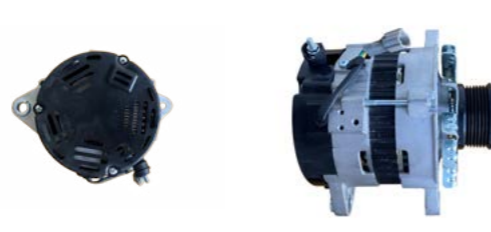
OEM NO.: 0350004628
Voltage 电压: 24V
Current 电流: 50A
Pulley 皮带轮: 7PK 69mm

SY NO.: SYKO005



OEM NO.: 0350004838
Voltage 电压: 24V
Current 电流: 50A
Pulley 皮带轮: 12PK80/84 孔 22.2

SY NO.: SYKO006



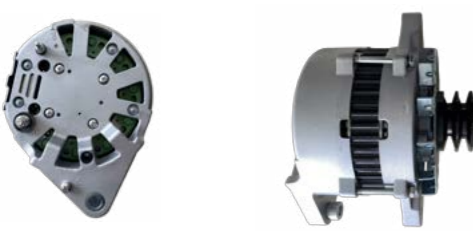
OEM NO.: 0350004858
Voltage 电压: 24V
Current 电流: 50A
Pulley 皮带轮: 7PK70/74 孔 22.2

SY NO.: SYKO013



OEM NO.: 0350008700
Voltage 电压: 24V
Current 电流: 90A
Pulley 皮带轮: 7PK

SY NO.: SYKO007



OEM NO.: 0350008430
Voltage 电压: 24V
Current 电流: 90A
Pulley 皮带轮: 2B 85mm

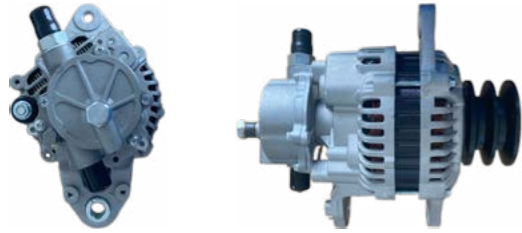
SY NO.: SYKO008



OEM NO.: 6008219360
Voltage 电压: 24V
Current 电流: 75A
Pulley 皮带轮: 1V-95



SY NO.: SYMI001



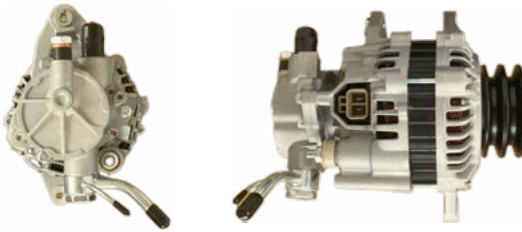
OEM NO.: A3TN5586
Voltage 电压: 24V
Current 电流: 50A
Pulley 皮带轮: 2B 82mm 带泵 90cc

SY NO.: SYMI002



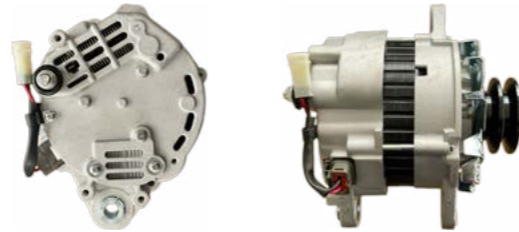
OEM NO.: A5TA8192
Voltage 电压: 12V
Current 电流: 85A
Pulley 皮带轮: 4PK

SY NO.: SYMI003A



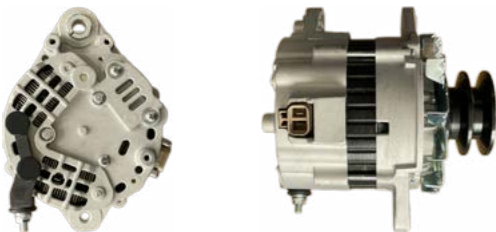
OEM NO.: 3730042860
Voltage 电压: 12V
Current 电流: 75A
Pulley 皮带轮: 2V082/80

SY NO.: SYMI004



OEM NO.: A4TU5485
Voltage 电压: 24V
Current 电流: 50A
Pulley 皮带轮: 2PK/3PK

SY NO.: SYMI005



OEM NO.: A4TU8093
Voltage 电压: 24V
Current 电流: 80A
Pulley 皮带轮: 6PK 65mm 28851

SY NO.: SYMI008



OEM NO.: A3TR5092
Voltage 电压: 24V
Current 电流: 80A
Pulley 皮带轮: 8PK 72mm

SY NO.: SYMI009



OEM NO.: A4TU5486
Voltage 电压: 24V
Current 电流: 50A
Pulley 皮带轮: 2PK/3PK

SY NO.: SYMI010



OEM NO.: A3T00599
Voltage 电压: 12V
Current 电流: 75A
Pulley 皮带轮: 2PK

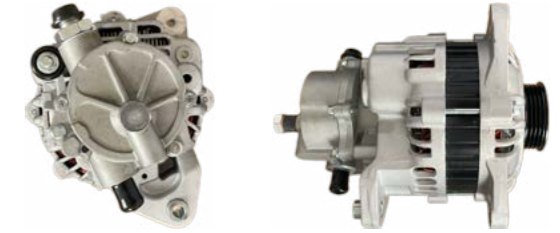


SY NO.: SYMI011



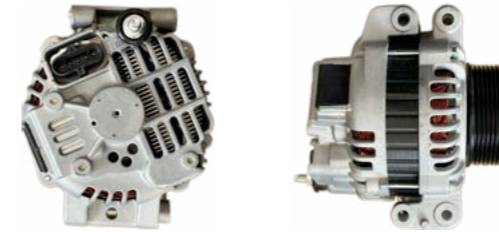
OEM NO.: 3730048100
Voltage 电压: 24V
Current 电流: 55A
Pulley 皮带轮: 8PK

SY NO.: SYMI012



OEM NO.: A3TN1791
Voltage 电压: 12V
Current 电流: 95A
Pulley 皮带轮: 4PK

SY NO.: SYMI013



OEM NO.: A4TR5691
Voltage 电压: 24V
Current 电流: 100A
Pulley 皮带轮: 10PK 88mm

SY NO.: SYMI014



OEM NO.: A002TJ0481
Voltage 电压: 12V
Current 电流: 115A
Pulley 皮带轮: 6PK 单向轮

SY NO.: SYMI015



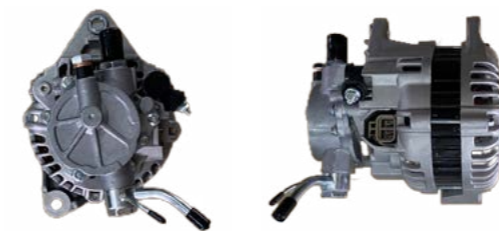
OEM NO.: A9TU6499
Voltage 电压: 24V
Current 电流: 150A
Pulley 皮带轮: 10PK 106mm(1151)

SY NO.: SYMI016



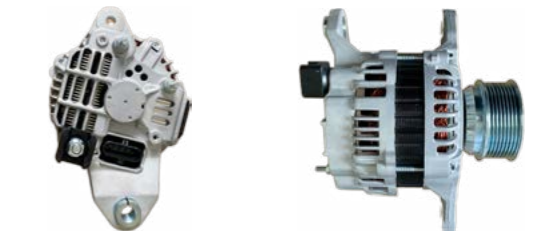
OEM NO.: CA1741IR
Voltage 电压: 12V
Current 电流: 120A
Pulley 皮带轮: 6PK 54mm

SY NO.: SYMI017



OEM NO.: 373004X500
Voltage 电压: 12V
Current 电流: 110A
Pulley 皮带轮: 5PK 28608

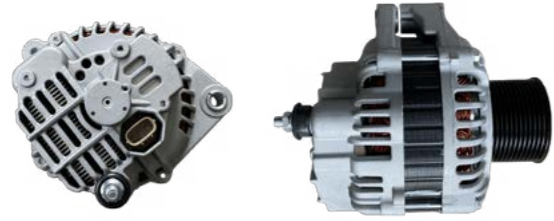
SY NO.: SYMI018



OEM NO.: A4TR6391
Voltage 电压: 24V
Current 电流: 110A
Pulley 皮带轮: 8PK 75mm



SY NO.: SYMI019



OEM NO.: A4TA0592
Voltage 电压: 24V
Current 电流: 90A
Pulley 皮带轮: 12PK 69mm

SY NO.: SYMI020



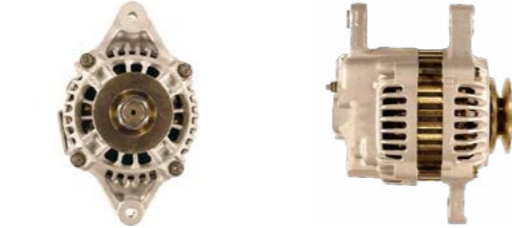
OEM NO.: A9TU5591
Voltage 电压: 24V
Current 电流: 150A
Pulley 皮带轮: 8PK 86mm

SY NO.: SYMI021



OEM NO.: A2T33891
Voltage 电压: 12V
Current 电流: 80A
Pulley 皮带轮: 4PK

SY NO.: SYMI022



OEM NO.: A7T01171
Voltage 电压: 12V
Current 电流: 40A
Pulley 皮带轮: 1V

SY NO.: SYMI023



OEM NO.: A3T02192
Voltage 电压: 12V
Current 电流: 75A
Pulley 皮带轮: 5PK

SY NO.: SYMI024



OEM NO.: A9TU5482
Voltage 电压: 24V
Current 电流: 90A
Pulley 皮带轮: 3A 82mm 带法兰

SY NO.: SYMI025



OEM NO.: A4TA8191
Voltage 电压: 24V
Current 电流: 100A
Pulley 皮带轮: 10PK 64mm

SY NO.: SYMI026



OEM NO.: A4TU5491
Voltage 电压: 24V
Current 电流: 100A
Pulley 皮带轮: 8PK 72mm



SY NO.: SYMI027



OEM NO.: 3730041012
Voltage 电压: 24V
Current 电流: 30A
Pulley 皮带轮: 1V082mm

SY NO.: SYMI028



OEM NO.: 3730042200
Voltage 电压: 12V
Current 电流: 65A
Pulley 皮带轮: 1V84mm

SY NO.: SYMI029



OEM NO.: 6675292
Voltage 电压: 12V
Current 电流: 90A
Pulley 皮带轮: 1V083mm

SY NO.: SYMI030



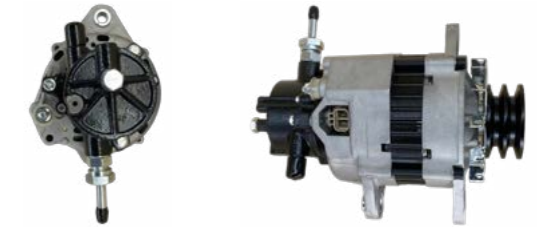
OEM NO.: A7T03277
Voltage 电压: 12V
Current 电流: 40A
Pulley 皮带轮: A73mm

SY NO.: SYMI031



OEM NO.: A9TU5182
Voltage 电压: 24V
Current 电流: 110A
Pulley 皮带轮:

SY NO.: SYMI032



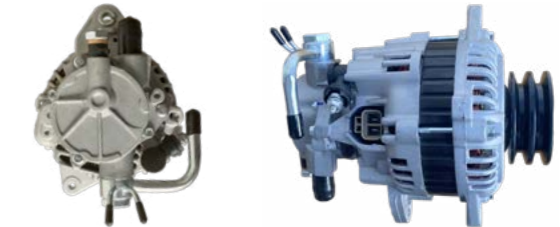
OEM NO.: 3730041751
Voltage 电压: 24V
Current 电流: 70A
Pulley 皮带轮:

SY NO.: SYMI033



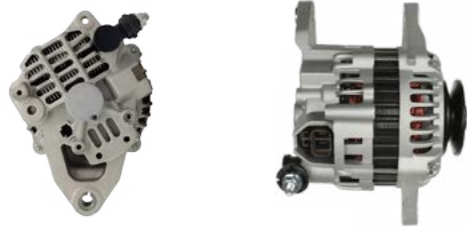
OEM NO.: A7TA0171
Voltage 电压: 12V
Current 电流: 45A
Pulley 皮带轮: A72/74mm

SY NO.: SYMI034



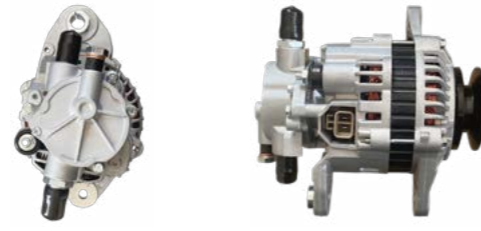
OEM NO.: 3730042355
Voltage 电压: 12V
Current 电流: 110A
Pulley 皮带轮: 2V082/84

SY NO.: SYMI035



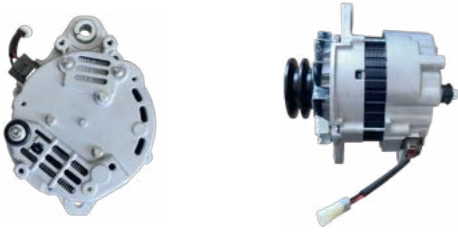
OEM NO.: A5TB1871
Voltage 电压: 12V
Current 电流: 80A
Pulley 皮带轮: 1PK

SY NO.: SYMI036



OEM NO.: A3TN5082
Voltage 电压: 24V
Current 电流: 35A
Pulley 皮带轮: 2PK

SY NO.: SYMI037



OEM NO.: A4TU3699
Voltage 电压: 24V
Current 电流: 50A
Pulley 皮带轮: 2PK

SY NO.: SYMI038



OEM NO.: 3730047400
Voltage 电压: 12V
Current 电流: 65A
Pulley 皮带轮: 1V 带泵

SY NO.: SYMI039



OEM NO.: A4TR6791
Voltage 电压: 24V
Current 电流: 130A
Pulley 皮带轮: 10PK70

SY NO.: SYPE001



OEM NO.: 8SC3238
Voltage 电压: 24V
Current 电流: 150A
Pulley 皮带轮: 2A83

SY NO.: SYPE002



OEM NO.: 3096
Voltage 电压: 24V
Current 电流: 110A
Pulley 皮带轮: 2A76

SY NO.: SYPE003



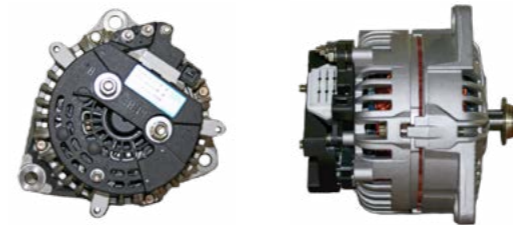
OEM NO.: 1277A740
Voltage 电压:
Current 电流:
Pulley 皮带轮:

SY NO.: SYPE004



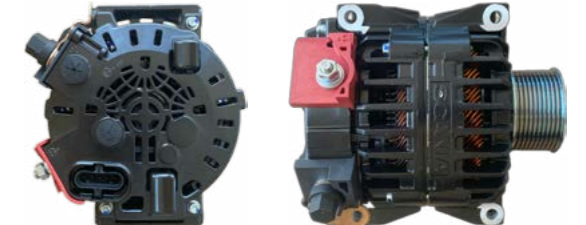
OEM NO.: AVIC2002
Voltage 电压: 12V
Current 电流: 150A
Pulley 皮带轮: 8PK

SY NO.: SYPE005



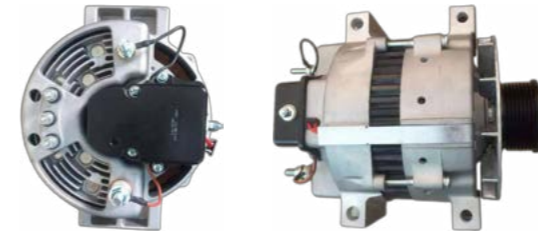
OEM NO.: AVI144S3001
Voltage 电压: 24V
Current 电流: 110A
Pulley 皮带轮:

SY NO.: SYPE006



OEM NO.: 2448165
Voltage 电压: 24V
Current 电流: 150A
Pulley 皮带轮: 8PK

SY NO.: SYPE007



OEM NO.: BLP3312
Voltage 电压: 24V
Current 电流: 140A
Pulley 皮带轮:

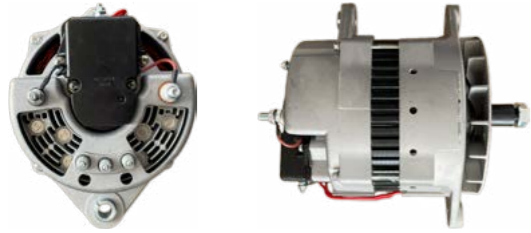
SY NO.: SYPE008



OEM NO.: A0014962PA
Voltage 电压: 12V
Current 电流: 320A
Pulley 皮带轮:



SY NO.: SYPE009



OEM NO.: BLD3314 3975140
Voltage 电压: 24V
Current 电流: 140A
Pulley 皮带轮:

SY NO.: SYPE010



OEM NO.: 8SC3009Z
Voltage 电压: 24V
Current 电流: 175A
Pulley 皮带轮: 2PK

SY NO.: SYPE011



OEM NO.: 5283555
Voltage 电压: 24V
Current 电流: 120A
Pulley 皮带轮:

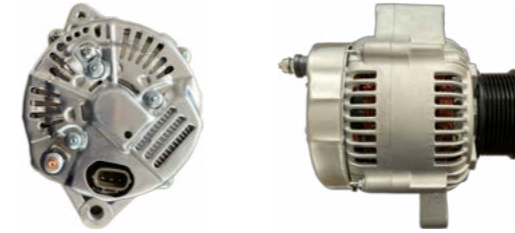
SY NO.: SYPE012



OEM NO.: 8SC2235
Voltage 电压: 12V
Current 电流: 185A
Pulley 皮带轮:



SY NO.: SYTO001



OEM NO.: 1012114050
Voltage 电压: 24V
Current 电流: 60A
Pulley 皮带轮: 8PK 77mm

SY NO.: SYTO002



OEM NO.: 1022119090
Voltage 电压: 12V
Current 电流: 80A
Pulley 皮带轮: 8PK-62mm

SY NO.: SYTO003A



OEM NO.: 1012110190
Voltage 电压: 12V
Current 电流: 70A
Pulley 皮带轮: 1V067

SY NO.: SYTO004



OEM NO.: 1022114150
Voltage 电压: 24V
Current 电流: 80A
Pulley 皮带轮: 2A76

SY NO.: SYTO005



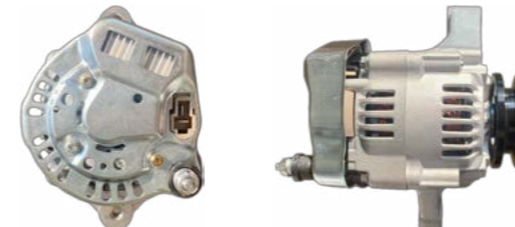
OEM NO.: 1012117780
Voltage 电压: 12V
Current 电流: 140A
Pulley 皮带轮: 8PK

SY NO.: SYTO006



OEM NO.: 1012112770
Voltage 电压: 12V
Current 电流: 55A
Pulley 皮带轮: 0-69mm

SY NO.: SYTO007



OEM NO.: 1002114731
Voltage 电压: 12V
Current 电流: 40A
Pulley 皮带轮: 1PK

SY NO.: SYTO008



OEM NO.: 2706016320
Voltage 电压: 12V
Current 电流: 70A
Pulley 皮带轮: 5PK

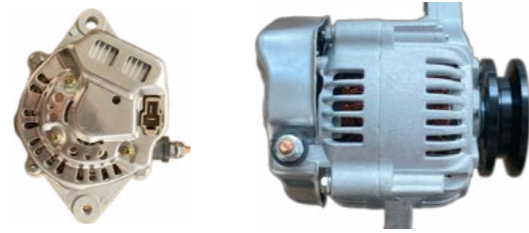


SY NO.: SYTO009



OEM NO.: 1002114650
Voltage 电压: 12V
Current 电流: 40A
Pulley 皮带轮: 1PK 69mm

SY NO.: SYTO010



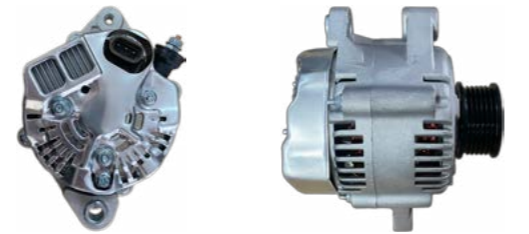
OEM NO.: 1012112850
Voltage 电压: 12V
Current 电流: 60A
Pulley 皮带轮: 1PK 69mm

SY NO.: SYTO011



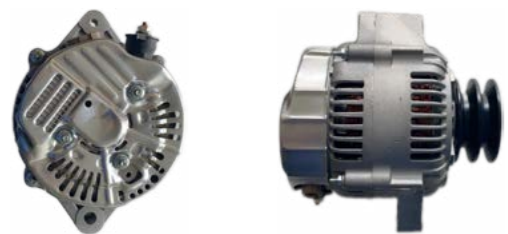
OEM NO.: 2706058340
Voltage 电压: 24V
Current 电流: 80A
Pulley 皮带轮: 2O82

SY NO.: SYTO012



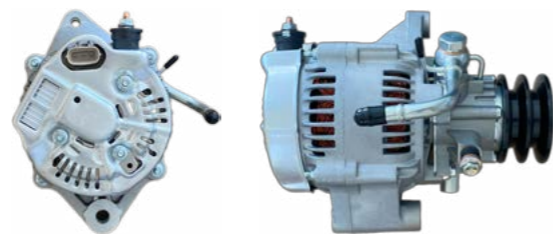
OEM NO.: 27060BZ110
Voltage 电压:
Current 电流:
Pulley 皮带轮:

SY NO.: SYTO013



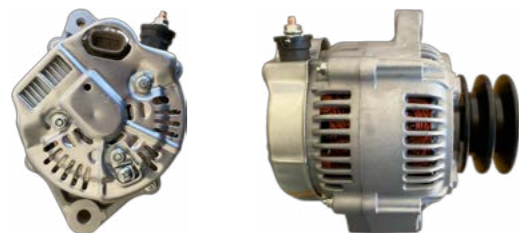
OEM NO.: 1022114150
Voltage 电压: 24V
Current 电流: 60A
Pulley 皮带轮: 2O82mm

SY NO.: SYTO014



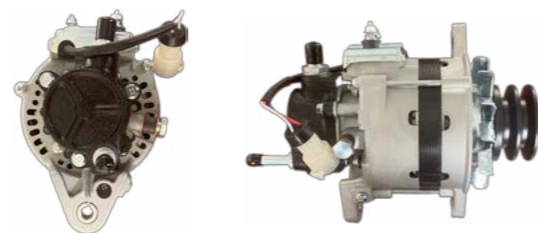
OEM NO.: 1002115200
Voltage 电压: 12V
Current 电流: 70A
Pulley 皮带轮: 2A74 带泵

SY NO.: SYTO015



OEM NO.: 1012119940
Voltage 电压: 12V
Current 电流: 110A
Pulley 皮带轮: 2PK

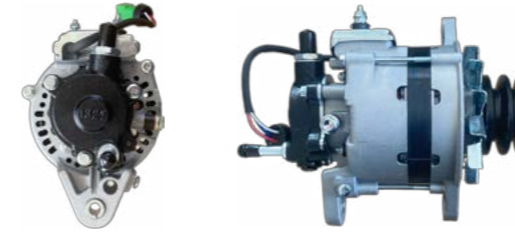
SY NO.: SYTO016



OEM NO.: LS-16130
Voltage 电压: 12V
Current 电流: 80A
Pulley 皮带轮: 2PK 30CC

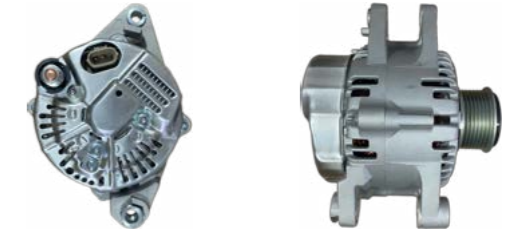


SY NO.: SYTO017



OEM NO.: 2704054060
Voltage 电压: 12V
Current 电流: 60A
Pulley 皮带轮: 2PK 25CC

SY NO.: SYTO018



OEM NO.: 373004A300
Voltage 电压: 12V
Current 电流: 110A
Pulley 皮带轮: 7PK

SY NO.: SYTO019



OEM NO.: 1002104520
Voltage 电压: 12V
Current 电流: 100A
Pulley 皮带轮: 8PK 57mm

SY NO.: SYTO020



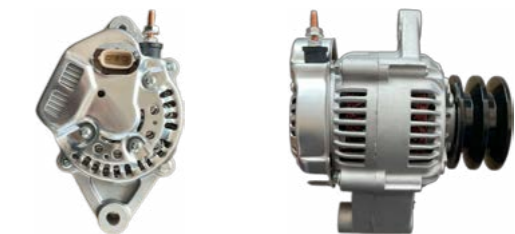
OEM NO.: 1042101870
Voltage 电压: 12V
Current 电流: 130A
Pulley 皮带轮: 7PK 58mm

SY NO.: SYTO021



OEM NO.: 1022111360
Voltage 电压: 12V
Current 电流: 80A
Pulley 皮带轮: 2PK

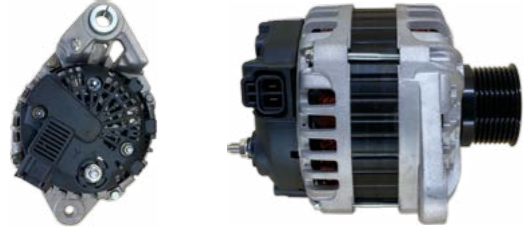
SY NO.: SYTO022



OEM NO.: 1012112240
Voltage 电压: 12V
Current 电流: 55A
Pulley 皮带轮: 1PK76

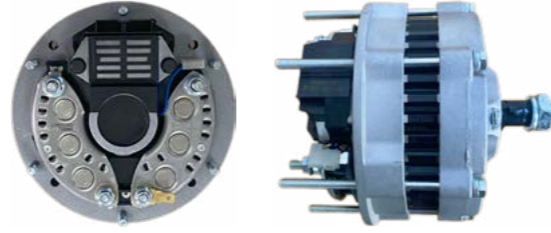


SY NO.: SYVA001



OEM NO.: 3730048000
Voltage 电压: 24V
Current 电流: 70A
Pulley 皮带轮: 8PK

SY NO.: SYVA002



OEM NO.: CA1048IR
Voltage 电压: 12V
Current 电流: 50A/52A 6柱
Pulley 皮带轮:

SY NO.: SYVA009



OEM NO.: CA1085IR
Voltage 电压: 12V
Current 电流: 100A
Pulley 皮带轮: 6PK-65mm

SY NO.: SYVA010



OEM NO.: 12459N
Voltage 电压: 12V
Current 电流: 70A
Pulley 皮带轮: 1PK

SY NO.: SYVA003



OEM NO.: CA1192IR
Voltage 电压: 12V
Current 电流: 60A
Pulley 皮带轮: 0-79mm

SY NO.: SYVA004



OEM NO.: CA1662IR
Voltage 电压: 12V
Current 电流: 125A
Pulley 皮带轮: 6PK-56mm 单向轮

SY NO.: SYVA011



OEM NO.: 2541477
Voltage 电压: 12V
Current 电流: 50A
Pulley 皮带轮: 1PK

SY NO.: SYVA012



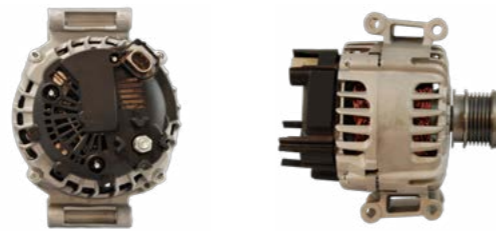
OEM NO.: CA1906IR
Voltage 电压: 12V
Current 电流: 120A
Pulley 皮带轮: 5PK 56mm

SY NO.: SYVA005



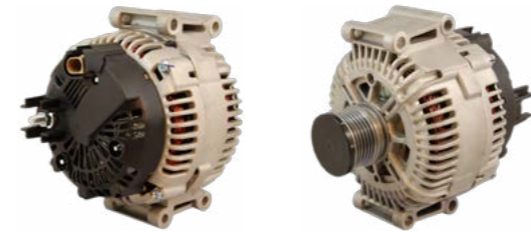
OEM NO.: 21Q642001
Voltage 电压: 24V
Current 电流: 90A
Pulley 皮带轮: 8PK-62mm

SY NO.: SYVA006



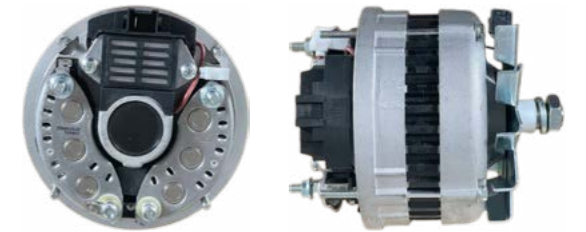
OEM NO.: TG12C063
Voltage 电压: 12V
Current 电流: 120A
Pulley 皮带轮: 6PK-48mm 单向轮 28751

SY NO.: SYVA013



OEM NO.: CA2038IR
Voltage 电压: 12V
Current 电流: 180A
Pulley 皮带轮: 6PK49mm

SY NO.: SYVA014



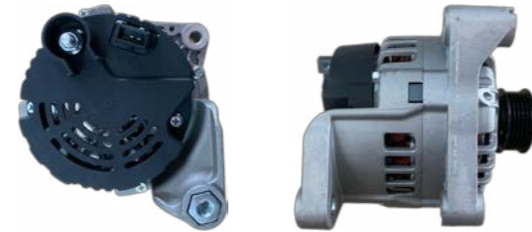
OEM NO.: 12302N
Voltage 电压: 12V
Current 电流: 60A 4柱
Pulley 皮带轮:

SY NO.: SYVA007



OEM NO.: TG23C017
Voltage 电压: 12V
Current 电流: 220A
Pulley 皮带轮: 6PK-51.3mm 单向轮

SY NO.: SYVA008



OEM NO.: CA1599IR
Voltage 电压: 12V
Current 电流: 120A
Pulley 皮带轮: 5PK-54mm

SY NO.: SYVA015



OEM NO.: 3730003100
Voltage 电压: 12V
Current 电流: 70A
Pulley 皮带轮: 5PK

SY NO.: SYVA016



OEM NO.: 300111407
Voltage 电压: 12V
Current 电流: 70A
Pulley 皮带轮: 1PK

SY NO.: SYVA017



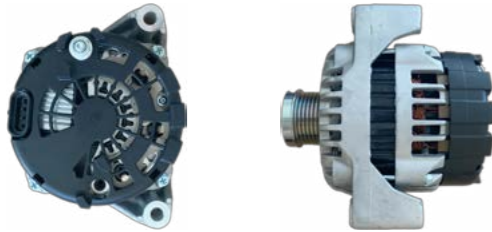
OEM NO.: CA1956IR
Voltage 电压: 12V
Current 电流: 100A
Pulley 皮带轮: 6PK

SY NO.: SYVA018



OEM NO.: 300111410
Voltage 电压: 12V
Current 电流: 75A
Pulley 皮带轮: 6PK

SY NO.: SYVA019



OEM NO.: A6621544102
Voltage 电压: 12V
Current 电流: 115A
Pulley 皮带轮: 6PK 单向皮带轮

SY NO.: SYHI001



OEM NO.: LR150715
Voltage 电压: 24V
Current 电流: 40A
Pulley 皮带轮:

SY NO.: SYHI002



OEM NO.: LR180722
Voltage 电压: 12V
Current 电流: 80A
Pulley 皮带轮: 6PK-60/64mm

SY NO.: SYHI003



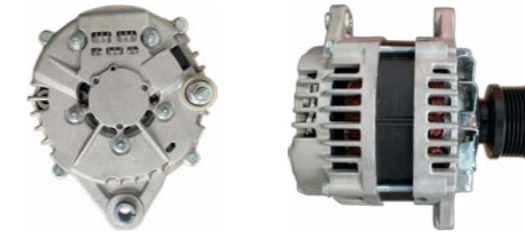
OEM NO.: JA1526IR
Voltage 电压: 12V
Current 电流: 70A
Pulley 皮带轮: 6PK

SY NO.: SYHI004



OEM NO.: JA158IR
Voltage 电压: 12V
Current 电流: 60A
Pulley 皮带轮: 1PK

SY NO.: SYHI005



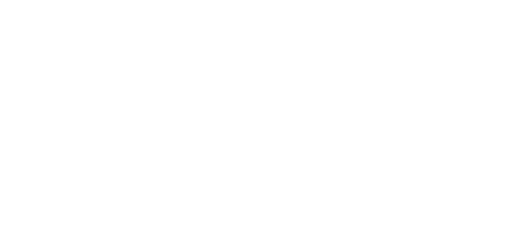
OEM NO.: LR1110733
Voltage 电压: 12V
Current 电流: 110A
Pulley 皮带轮:

SY NO.: SYHI007



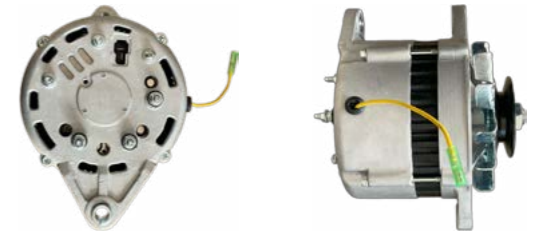
OEM NO.: LR190752
Voltage 电压: 12V
Current 电流: 90A
Pulley 皮带轮: 7PK-60mm 单向轮 EC4227

SY NO.: SYHI008



OEM NO.:
Voltage 电压:
Current 电流:
Pulley 皮带轮:

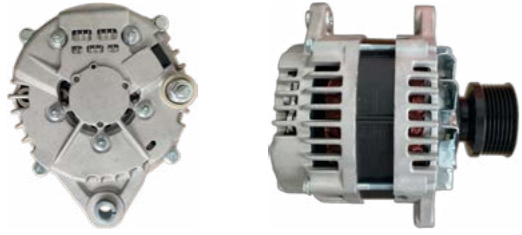
SY NO.: SYHI009



OEM NO.: LR18003
Voltage 电压: 12V
Current 电流: 80A
Pulley 皮带轮: 1PK 74mm



SY NO.: SYHI010



OEM NO.: LR280708B
Voltage 电压: 24V
Current 电流: 50A
Pulley 皮带轮: 7PK

SY NO.: SYHI011



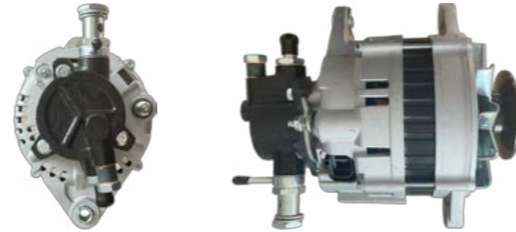
OEM NO.: 23100Z5769
Voltage 电压: 24V
Current 电流: 35A
Pulley 皮带轮:

SY NO.: SYHI012



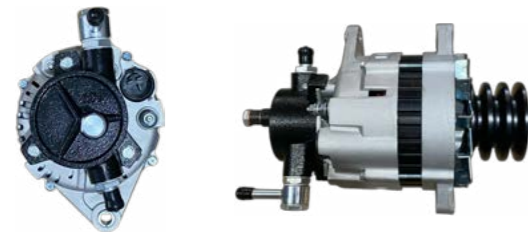
OEM NO.: LR1100508
Voltage 电压: 12V
Current 电流: 100A
Pulley 皮带轮: 6PK-60mm

SY NO.: SYHI013



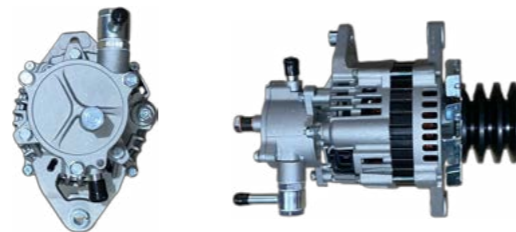
OEM NO.: LR235502
Voltage 电压: 24V
Current 电流: 35A
Pulley 皮带轮: 1PK 带泵

SY NO.: SYHI014



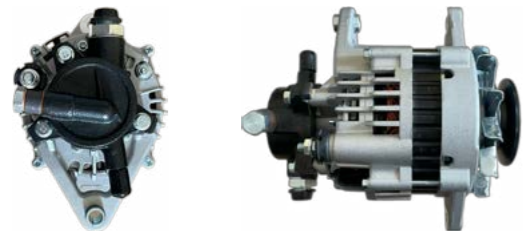
OEM NO.: LR250503
Voltage 电压: 24V
Current 电流: 55A
Pulley 皮带轮: 3A82

SY NO.: SYHI015



OEM NO.: 20217N
Voltage 电压: 24V
Current 电流: 50A
Pulley 皮带轮: 3A82

SY NO.: SYHI016



OEM NO.: LR170505
Voltage 电压: 12V
Current 电流: 70A
Pulley 皮带轮: 1PK 83mm 带泵

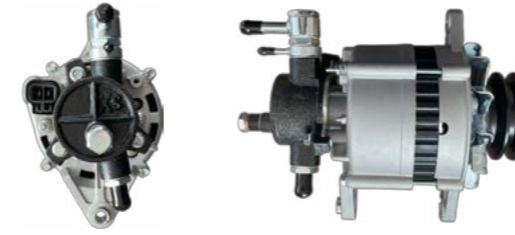
SY NO.: SYHI017



OEM NO.: JA1790IR
Voltage 电压: 12V
Current 电流: 65A
Pulley 皮带轮: 6PK 49mm



SY NO.: SYHI018



OEM NO.: LR160426
Voltage 电压: 12V
Current 电流: 60A
Pulley 皮带轮: 2PK84

SY NO.: SYHI019



OEM NO.: LR13595B
Voltage 电压: 12V
Current 电流: 35A
Pulley 皮带轮: 1PK68

SY NO.: SYHI020



OEM NO.: LR150421
Voltage 电压: 12V
Current 电流: 55A
Pulley 皮带轮: B82

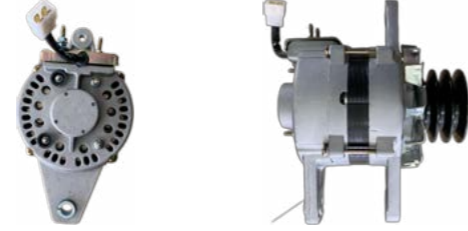


SY NO.: SYHINO001



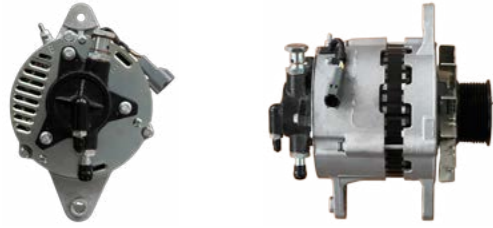
OEM NO.: 270501112A
Voltage 电压: 24V
Current 电流: 35A
Pulley 皮带轮: 1PK 带泵

SY NO.: SYHINO002



OEM NO.: 2310097105
Voltage 电压: 24V
Current 电流: 40A
Pulley 皮带轮: 3A 82mm

SY NO.: SYHINO003



OEM NO.: 2309996566
Voltage 电压: 24V
Current 电流: 50A
Pulley 皮带轮: 9PK 84mm 孔 22.2

SY NO.: SYHINO004



OEM NO.: 14274
Voltage 电压: 24V
Current 电流: 50A
Pulley 皮带轮: 2B80

SY NO.: SYHINO005



OEM NO.: 27060EW010
Voltage 电压: 24V
Current 电流: 60A
Pulley 皮带轮: 2PK

SY NO.: SYHINO006



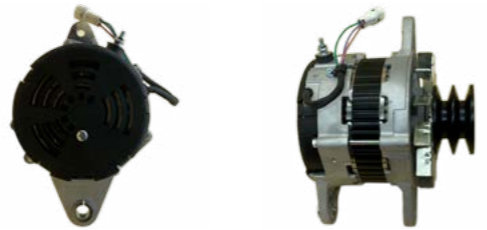
OEM NO.: 270501321
Voltage 电压: 24V
Current 电流: 50A
Pulley 皮带轮: 2B82 带泵

SY NO.: SYHINO007



OEM NO.: 270402210
Voltage 电压: 24V
Current 电流: 50A
Pulley 皮带轮: 2B82 孔 22.2

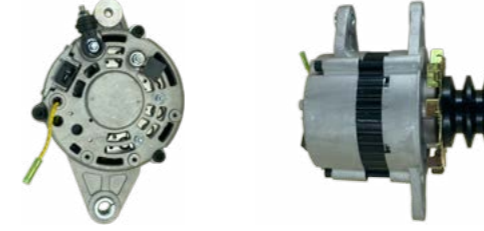
SY NO.: SYHINO008



OEM NO.: 270401641
Voltage 电压: 24V
Current 电流: 60A
Pulley 皮带轮: 2PK



SY NO.: SYHINO009



OEM NO.: 23100Z5602
Voltage 电压: 24V
Current 电流: 50A
Pulley 皮带轮:

SY NO.: SYHINO010



OEM NO.: EK100
Voltage 电压: 24V
Current 电流: 45A/60A
Pulley 皮带轮: 2B 82mm

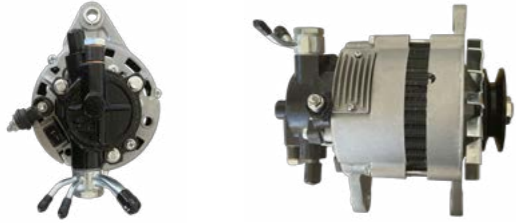
SY NO.: SYHINO011



OEM NO.: 270201380
Voltage 电压: 24V
Current 电流: 45A/60A
Pulley 皮带轮: 2B 82mm



SY NO.: SYHY001



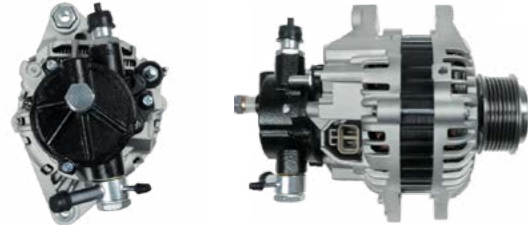
OEM NO.: 373002W000
Voltage 电压: 12V
Current 电流: 65A
Pulley 皮带轮: A80 带泵

SY NO.: SYHY002



OEM NO.: 3730093000
Voltage 电压: 24V
Current 电流: 50A
Pulley 皮带轮: 2PK

SY NO.: SYHY003



OEM NO.: 373004A112
Voltage 电压: 12V
Current 电流: 110A
Pulley 皮带轮: 7PK 单向轮

SY NO.: SYHY004A



OEM NO.: 65261017157
Voltage 电压: 24V
Current 电流: 60A/80A
Pulley 皮带轮: 2B 82mm

SY NO.: SYHY005



OEM NO.: 3730027021
Voltage 电压: 12V
Current 电流: 120A
Pulley 皮带轮: 6PK-60mm 单向轮 28805

SY NO.: SYHY006



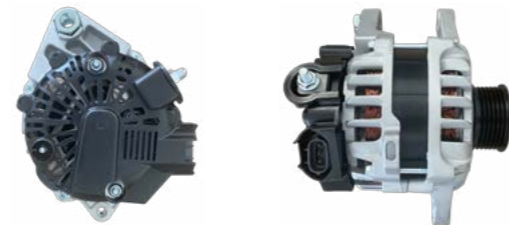
OEM NO.: 3730041700
Voltage 电压: 24V
Current 电流: 70A
Pulley 皮带轮: 2A 82mm

SY NO.: SYHY007



OEM NO.: 30090100007
Voltage 电压: 24V
Current 电流: 45A
Pulley 皮带轮: 2V84mm

SY NO.: SYHY008



OEM NO.: 373002B300
Voltage 电压: 12V
Current 电流: 90A
Pulley 皮带轮: 6PK 57.8mm



SY NO.: SYHY009



OEM NO.: 30090100207
Voltage 电压: 24V
Current 电流: 80A
Pulley 皮带轮: 8PK95